

Workstation Configuration

How to configure a client workstation
to run Visual Dolphin

Configuring a Client Workstation for Visual Dolphin

This document provides assistance in the setup and configuration of a workstation for Visual Dolphin. The main steps that this document covers are the following:

- 1) Installation of Visual Dolphin Wizard
- 2) Setup ODBC connection
- 3) Setup .INI files
- 4) Setup Regional Settings System Date format
- 5) Create Shortcut Icon for Visual Dolphin
- 6) Installing the missing DLL or OCX libraries

- In a multi-user environment, we assume that Visual Dolphin programs are already installed on the server, the database is already created in the SQL Server, and the network connection is properly established between server and workstations.
- For a single-user environment, we assume that Visual Dolphin program folder and SQL database are restored on the local hard disk.

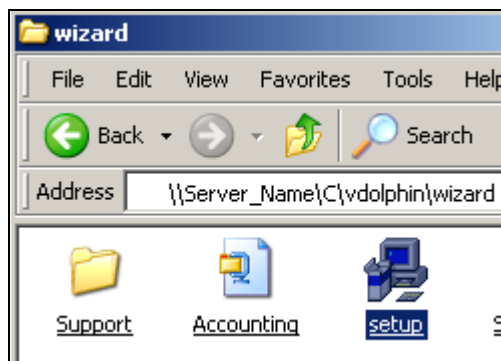
Installation of Visual Dolphin Wizard

The Wizard is a setup program that comes with Visual Dolphin. It installs the necessary libraries and utilities on the workstation.

First, run the **Setup.exe** program located in Wizard folder under Visual Dolphin folder and follow the on-screen instructions by keeping the default installation options.

The location of Visual Dolphin folder varies from one system to another. For instance, if you have a multi-user environment, where Visual Dolphin programs and Data are installed on your server, you find the folder on the server. In a single-user environment, you will find the folder on your hard disk

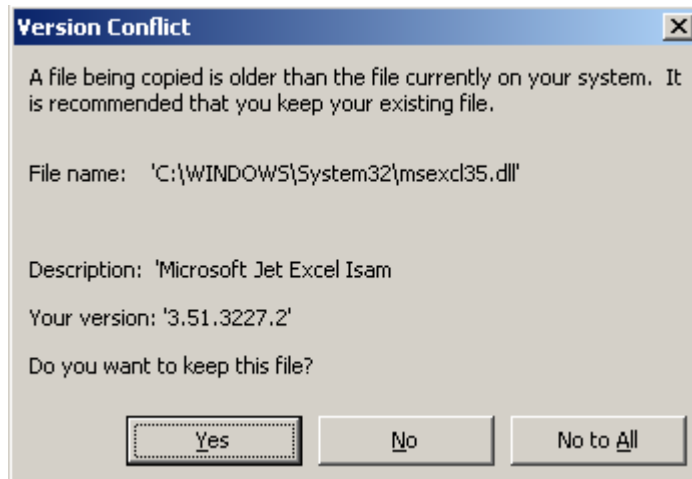
In the example below, the "server_name" is the name of your server and the path of Visual Dolphin varies from one system to another:



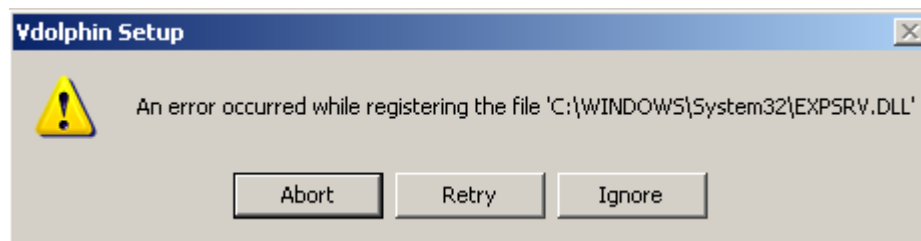
In a single-user environment, you will find the folder on your hard disk. The path of Visual Dolphin varies from one system to another:



During the setup process, you may receive messages informing you that the file being installed is older than the existing system file. Always choose **YES** to keep the existing files.



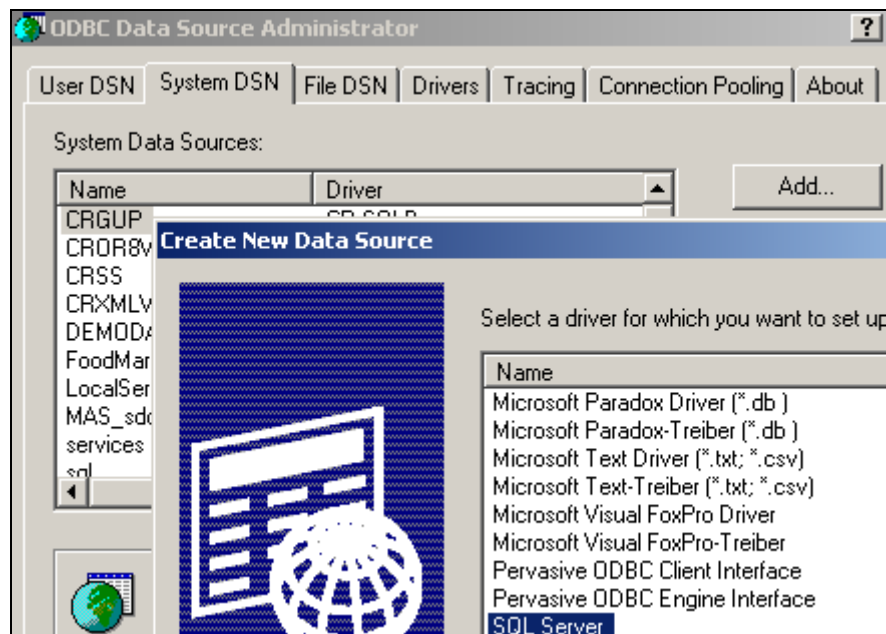
When an error message is displayed while registering a file, choose Ignore.



Configuring an ODBC data source

In this step you will create the ODBC for Visual Dolphin to access the Microsoft SQL Server Databases. The ODBC Data Source is found in Control Panel --> Administrative Tools.

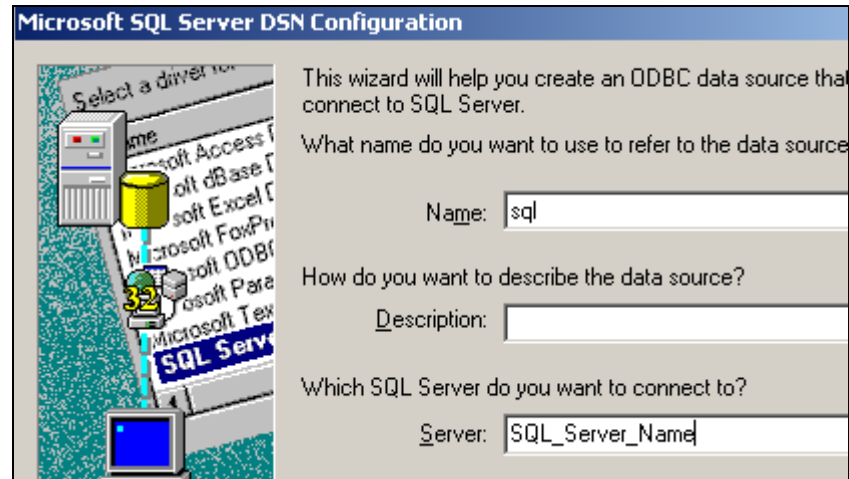
- a. Click on System DSN, press <ADD>, then choose SQL Server from the list of drivers:



- b. Specify the name of the connection (as a convention it is usually named as “sql”), and then enter the name of SQL Server database where Visual Dolphin data is stored.

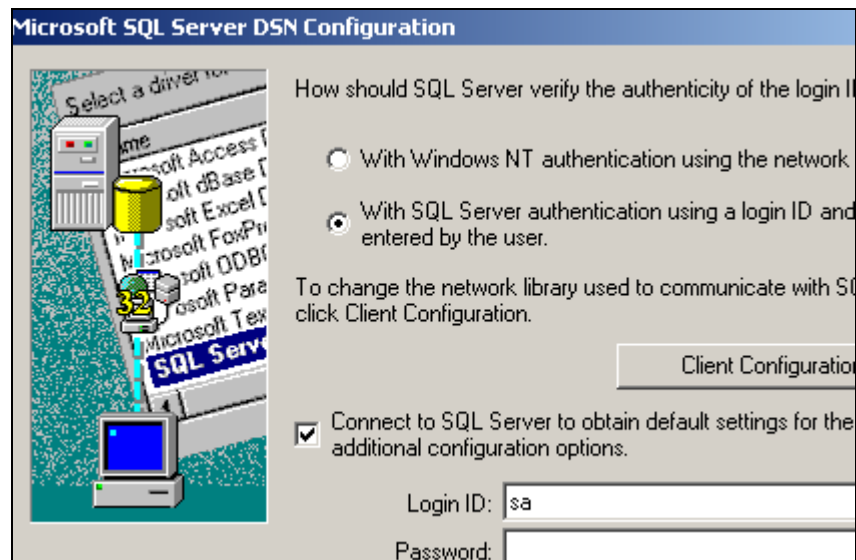
In the example below, the SQL_Server_Name varies from one system to another. For a multi-user environment, it is the name of the Server where the SQL database is installed, while in a single-user system, it is the name of the workstation.

Press **<Next>** to proceed to the next phase of the installation.



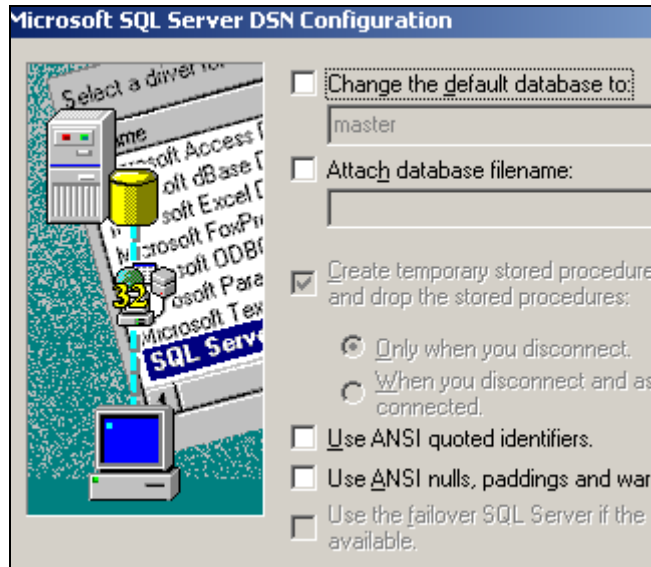
- c. In the Authentication screen, choose “With SQL Server Authentication...” and enter the SQL administrator Login ID and password.

Press **<Next>** to proceed to the next phase of the installation.

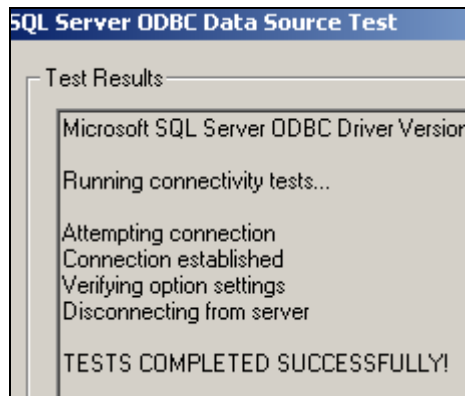


- d. Uncheck the “Use ANSI quoted identifiers” and “Use ANSI nulls, paddings...”.

Press <Next> to proceed to the next phase of the installation.



- e. Press <Finish> in the last screen without changing the settings, and then, press <Test Data Sources...>. The result of the test should be successful:



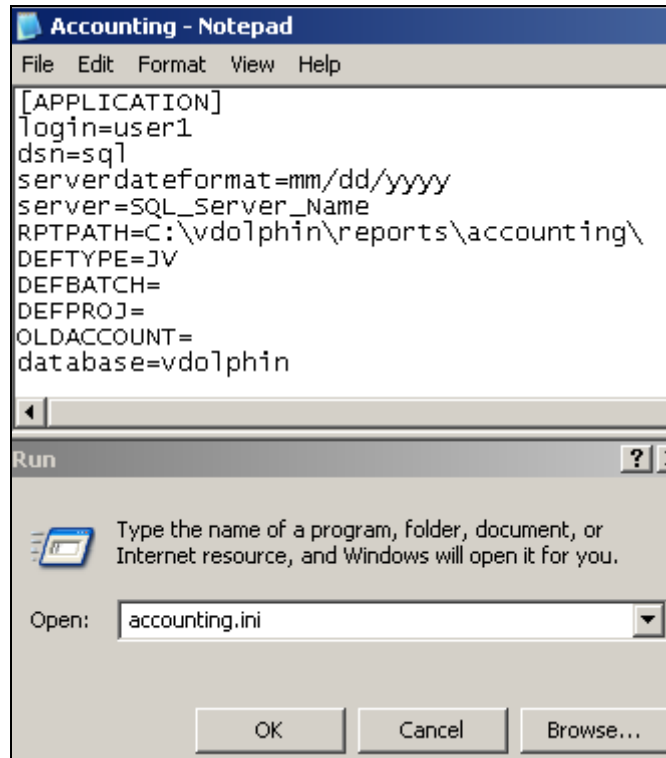
Setup of the INI files

The .INI files are the initialization files of Visual Dolphin modules. They contain some instructions and default settings defined for each workstation. Usually, these files are located in INI folder under Visual Dolphin folder, the path of which varies from one system to another:



To start setting .INI files, follow the instructions below:

- a. Copy the files located in the INI folder into your Windows folder (ex: "C:\Windows", "C:\WINNT", etc...)
- b. Press **<Start>** of windows taskbar, then select **RUN** command, and type in it: *accounting.ini*
- c. The "*accounting.ini*" text file opens as shown below to let you configure the default settings of Visual Dolphin:



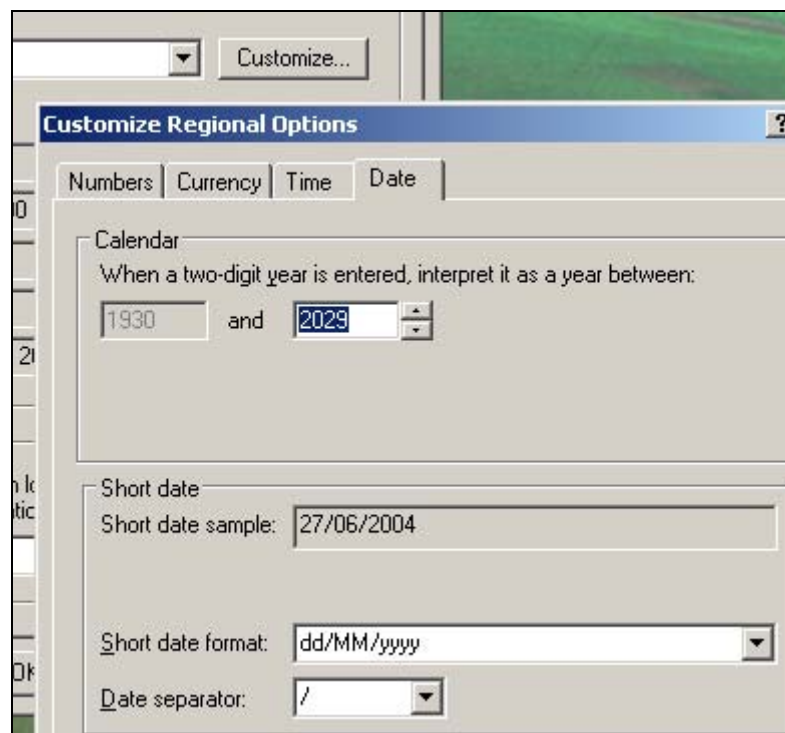
- d. Important commands of .INI files that should be setup correctly are:
 - i. Login=user1 (specify here the name of Visual Dolphin user)
 - ii. Dsn= sql (specify here the System DSN name created in step (2.b))
 - iii. Server= SQL_Server_Name (is the name of the SQL server specified in step (2.b))
 - iv. RPTPATH= (is the location of the reports of the related .INI module – in this case Accounting reports. The path varies from one system to another)
 - v. Database= Vdolphin (is the name of Visual Dolphin database created in SQL – it varies from one system to another)
- e. Note that you need to repeat the steps b), c) and d) for all the modules installed in your system. Below is the list of some basic initialization files of Visual Dolphin modules:
 - Visualdolphin.ini (Main Menu of Visual Dolphin)
 - Administration.ini (The Administration module)
 - Invadministrator.ini (The inventory administrator module)
 - Inventory.ini (The General Inventory module)
 - Sales.ini (The Sales module)
 - Purchasing.ini (The Purchasing module)
 - Retail.ini (The Retail module)
 - Fixedassets.ini (The Fixed Asset module) and others...

Setup of the Regional Settings

The system date in the regional settings should comply with Visual Dolphin date format.

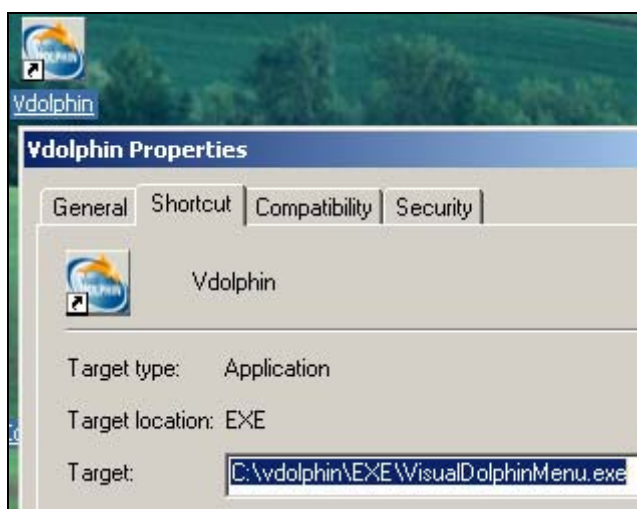
To adjust the date format, go into the Control Panel --> Regional Settings --> Regional Options, then, press **<Customize>** to open the “*Customize Regional Option*” and select the “*Date*” page.

The Short Date Sample format should be **dd/mm/yyyy**. See the example below:



Creating a Visual Dolphin shortcut

Create on your desktop a shortcut for **VisualDolphinMenu.exe**. The path varies from one system to another.



Installing the Missing DLL or OCX Libraries

Sometimes, even after setting up the workstation, running Visual Dolphin displays error messages and prevents execution.

“Run-Time Errors: OCX or DLL file is missing or not registered” messages are displayed. This is due to missing MS Windows libraries on the workstation and Visual Dolphin needs them to function properly.

In such cases, you should follow this procedure:

- a. Check if the OCX or DLL file exists in the OCX folder under Visual Dolphin folder or on your local hard disk.
- b. If the file is found, register it in your Windows environment by typing “regsvr32” command in the RUN Command window.
For example: If the error displayed is
“Run-Time Error: MSMASK32.OCX is not properly registered in your system”,
and you searched and found the file under c:\windows\system32 folder, then, type the following in the Run command:
`regsvr32 c:\windows\system32\MSMASK32.OCX`
- c. If the file is not found, search for it on another workstation or contact support at Software Design so that they can provide with the file.



Lebanon	Phone	961-1-399855	
	Fax	961-1-380420	
	PO.Box	166607 – 1100 2140 Ashrafieh Beirut – Lebanon	
United Arab Emirates	Phone	971-4-3383318	
	Fax	971-4-3383319	
	PO.Box	35046 Al Romoul Dubai – U.A.E.	
Saudi Arabia	Riyadh	Phone	966-1-4730784
		Fax	966-1-4730784
	Jeddah	Phone	966-2-6608824
		Fax	966-2-6603835
		PO.Box	5586 Riyadh 11432 - Kingdom Of Saudi Arabia
		Email	sdcg@softwaredesign.com.lb
	Website:	http://www.sd-lb.com	