

MS Excel Add-Ins Activation

How to activate the Add-Ins in Microsoft
Excel for Visual Dolphin

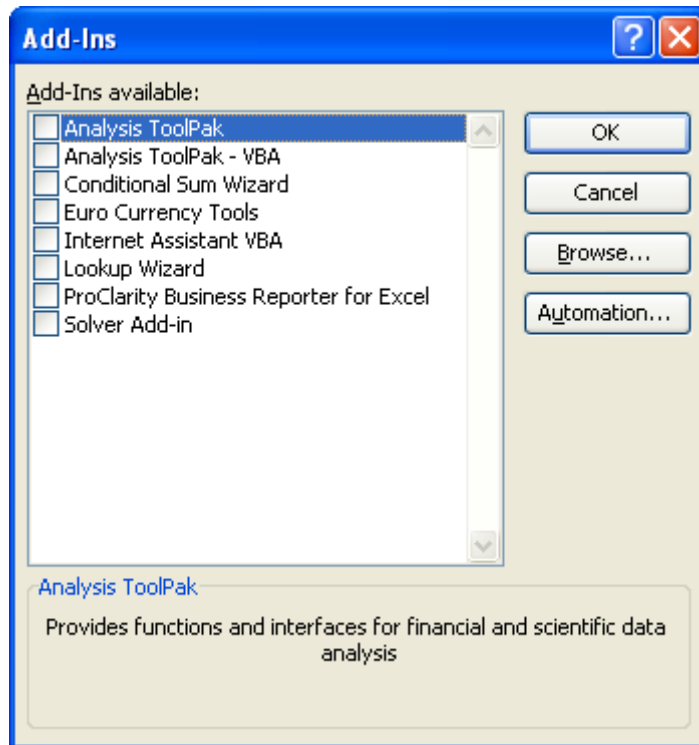
How to activate the MS Excel Add-Ins

Visual Dolphin includes predefined functions that enable access from Microsoft Excel to its database. The objective of these predefined functions is to allow users generate customized reports.

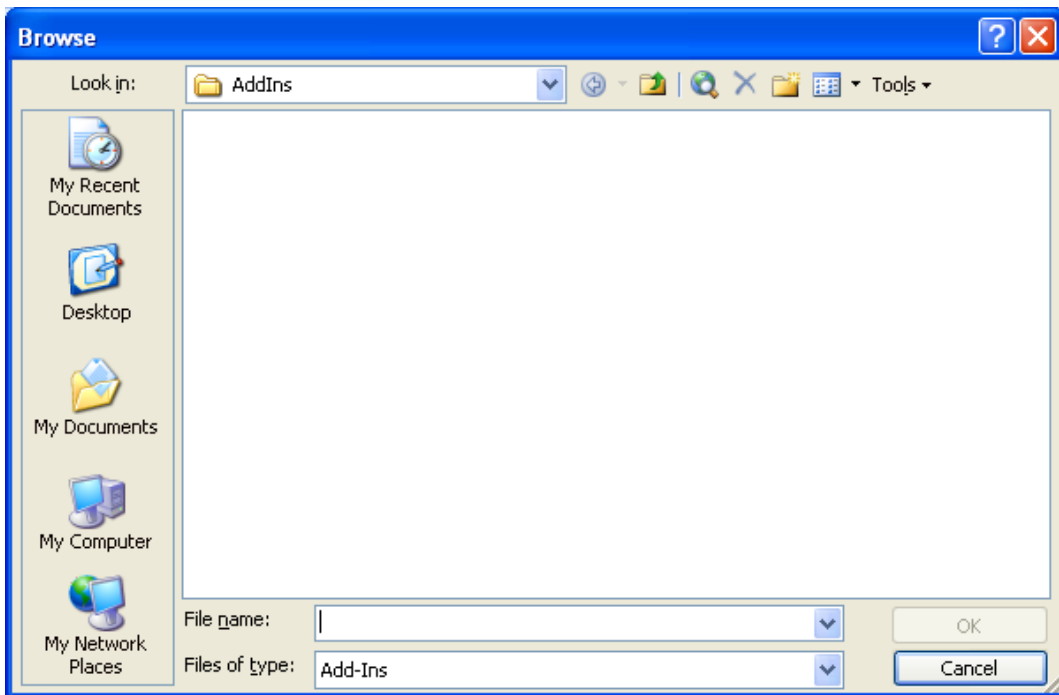
This paper describes the required settings to activate in MS Excel to access the Visual Dolphin functions.

Add-Ins Installation

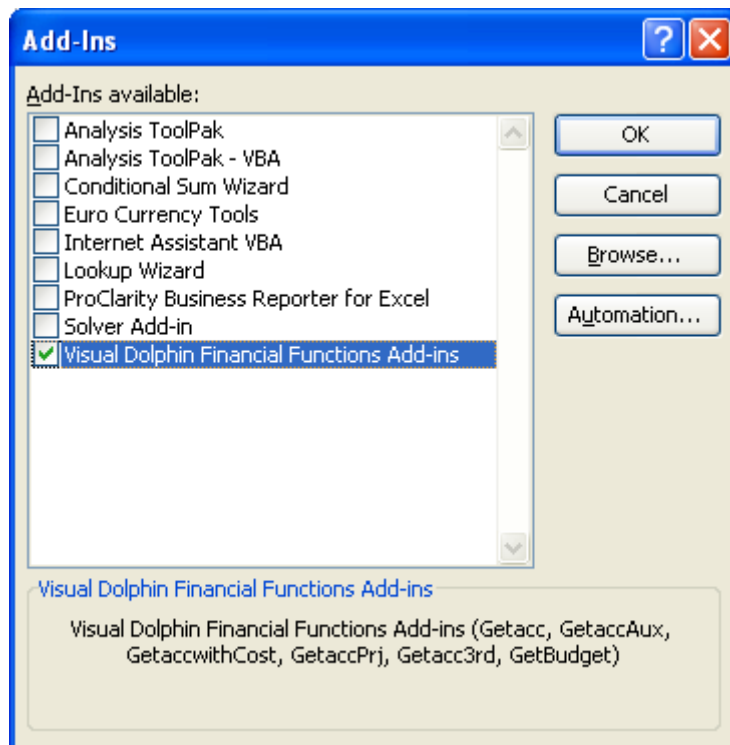
- Open a new excel sheet from Microsoft Office (not the Excel generator).
- Select Tools from the menu
- Select "Add Ins" from the Tools menu. You will get the following screen:



- Press on Browse. You will get the following path



- Paste the “**GetAIIFCT**” file in the folder.
- Once you paste it, select it, and press OK. The system should add the Add-Ins list “Visual Dolphin Financial Function Add Ins”.



- Select this new option and press on OK.
- Once done, the system should add all the Visual Dolphin functions in the user defined list.



Lebanon	Phone	961-1-399855	
	Fax	961-1-380420	
	PO.Box	166607 – 1100 2140 Ashrafieh Beirut – Lebanon	
United Arab Emirates	Phone	971-4-3383318	
	Fax	971-4-3383319	
	PO.Box	35046 Al Romoul Dubai – U.A.E.	
Saudi Arabia	Riyadh	Phone	966-1-4730784
		Fax	966-1-4730784
Jeddah	Phone	966-2-6608824	
	Fax	966-2-6603835	
	PO.Box	5586 Riyadh 11432 - Kingdom Of Saudi Arabia	
	Email	sdcg@softwaredesign.com.lb	
	Website:	http://www.sd-lb.com	